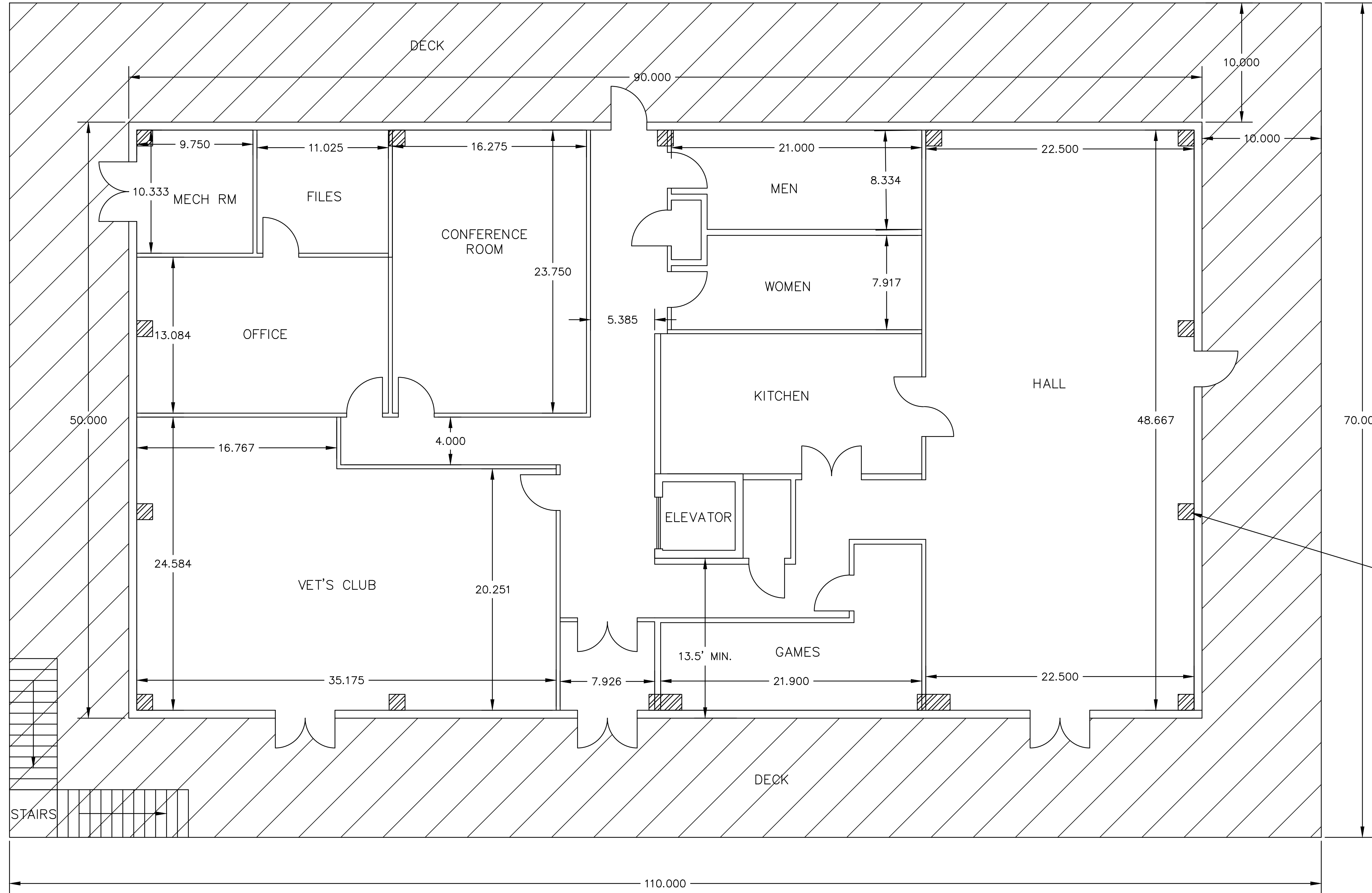


- NOTES;
1. SINGLE DOORS ARE 36" WIDTH; DOUBLE DOORS ARE 60" TOTAL WIDTH.
 2. EXTERIOR WALLS SHOWN AS 8".
 3. INTERIOR NON-PLUMBING WALLS ARE SHOWN AS 4.5"
 4. INTERIOR PLUMBING WALLS ARE SHOWN AS 6.5"
 5. LAYOUT AND DIMENSIONS ARE SHOWN FOR PLANNING PURPOSES ONLY. FINAL DIMENSIONS, LAYOUTS, AND LOCATIONS WILL BE COORDINATED BY THE CONTRACTOR AND OWNER.



No.	Submittal / Revision	By	Appr'd	Date
1	PRELIMINARY SPACE PLAN	JPT	JPT	10/9/17
2	ELEVATOR ADDED	JPT	JPT	6/4/18

NOT APPROVED FOR CONSTRUCTION

EXHIBIT

RACEY ENGINEERING
 312 WEST MAIN ST., P.O. BOX 387
 FRONT ROYAL, VA
 PH: (640) 743-9227 - FAX: (640) 743-6118

CHECKED: TISA
 DRAWN: JPT
 DESIGNED: JPT

PROPOSED BUILDING
FLOOR SPACE PLAN
 VFW POST 1860
 FRONT ROYAL, VA
 RACEY PROJECT NUMBER: 6328
 PUBLISH DATE: 10/9/2017